

FOR SALE

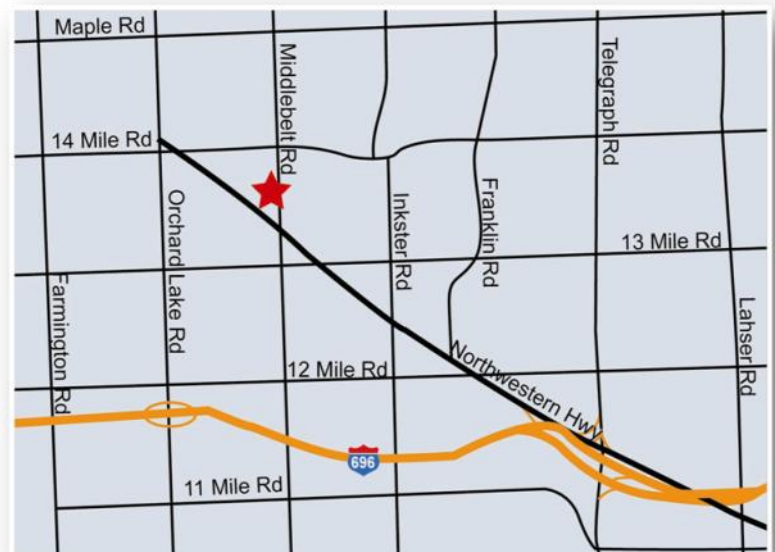


31805 Middlebelt, Suite 307

Farmington Hills, MI



- 925 Sq. Ft. Office Condominium
- Recently Renovated and Upgraded
- Exceptional Opportunity for Small Professional User
- Self-Contained Unit with 24/7 Access and HVAC Control
- Great Location & Access to Northwestern Hwy.



Daniel Canvasser

248-350-8141

daniel.canvasser@grubb-ellis.com

Ryan Brittain

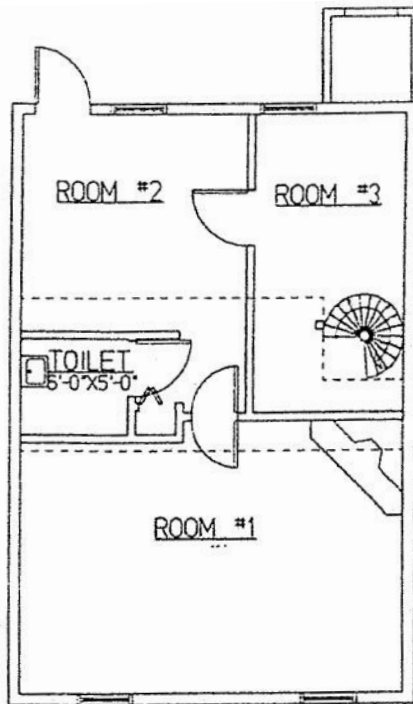
248-350-8161

ryan.brittain@grubb-ellis.com

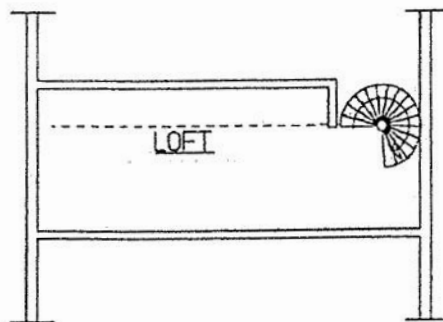
Grubb & Ellis Company | 26555 Evergreen Rd. | Suite 500 | Southfield, MI 48076 | www.grubb-ellis.com


The information contained herein was obtained from sources believed reliable; however, Grubb Ellis Company makes no guarantees, warranties, or representations as to the completeness or accuracy thereof. The presentation of this property is submitted subject to errors, omissions, change of price or conditions prior to sale or lease, or withdrawal without notice.

SITE PLAN



NORTH
 FLOOR PLAN
SCALE: 1/8" = 1'-0"



 LOFT PLAN
SCALE: 1/8" = 1'-0"

SUITE 307